

22 TIMES-STAR, ALAMEDA, CALIFORNIA
FRIDAY, NOVEMBER 21, 1947



CONTROL ROOM—In KONG's control room are the highly technical pieces of machinery and equipment which give this new FM (Frequency Modulation) station its voice on the air. The very latest

thing in radio, FM is rapidly gaining a public which will soon be satisfied with only this type of broadcast whereby real, full reproduction is guaranteed.



BROADCASTING STUDIO—From soundproof studios such as this are broadcast daily the FM programs heard on KONG, the Times-Star station. Interviews such as the one being aired are broadcast from this studio located in the Times-Star Building.

ALAMEDA
SHOULD BE PROUD
WITH THE
NEW HOME
NOW OCCUPIED
BY THE
Times-Star
AND
KONG

Alameda's New FM Station
WE WERE PLEASED
TO HAVE BEEN
SELECTED TO FURNISH
THE
SHEET METAL
BENNER & HAWMAN INC.
SHEET METAL
3421 HOLLIS STREET
OAKLAND

CALL US FOR ...

FLOORS LINOLEUM — ASPHALT
& RUBBER TILE
WALLS MOVABLE STEEL PARTITIONS
FOR DIVIDING OFFICE SPACE
CEILINGS ACOUSTICAL TREATMENT
FOR NOISE QUETING

**THREE SERVICES
BY ONE FIRM!**
F. K. PINNEY, INC.
636 CLAY STREET
Phone SUtter 1-7673 SAN FRANCISCO

**CAMISA BROS.
ROOFING CO.**



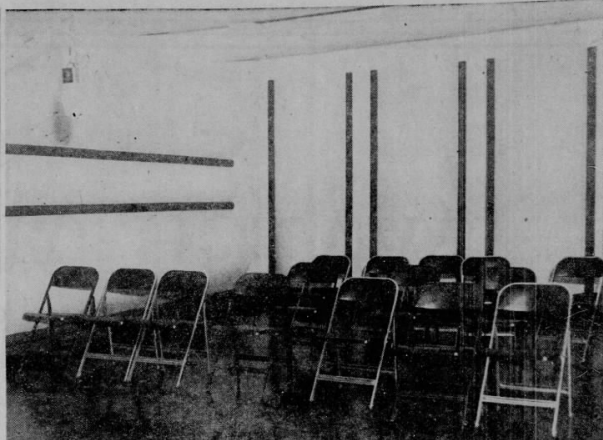
Invites You
To Inspect the
New Built Up Felt
and Gravel Roof
Atop the
**NEW TIMES-STAR
BUILDING**
"Designed To Last!"

PREPARE NOW FOR THE WET WEATHER
AHEAD WITH A NEW ROOF MADE OF
THE FINEST MATERIALS, LAID BY EXPERTS.
FREE ESTIMATES!
ROOF REPAIRS A SPECIALTY!

AUTHORIZED APPLICATORS
CERTAIN-TEED PRODUCTS
Serving Alameda and the East Bay Since 1931

Call LA kehurst 2-7266 or 3-1878

Complete Compensation Insurance
Member Associated Roofers of East Bay Counties, Inc.



KONG FM

Here's Data on the Latest And Finest Bay Radio Station

In many ways the chief significance of the dedication ceremony for the new Times-Star building by the Federal Communications Commission in the State Building is simply that it is now the building houses radio station KONG-FM.

The circumstance that makes the Times-Star's new home unique in the city is simply that it is now mounted by the slim antenna tower of KONG, that for the first time in the history of the newspaper and of the city, Alamedans now enjoy the facilities of their own radio station.

It may be many months before a majority of the citizens of Alameda become aware of the significance attached to KONG, KONG is a new station and FM is relatively new. Not many listeners own FM receivers, but indications are that before long most radio set owners will possess FM facilities and when that time comes, Alamedans will find KONG on the air with programs of local interest impossible to find on any other radio station.

KONG is not only the first radio station in Alameda, it is the first FM station in Alameda County.

From 2 to 6 p. m. Sunday the general public will be afforded an opportunity to visit the studios and offices of KONG on the third floor of the Times-Star building.

There they will see the most modern radio station west of the Rockies. Of the latest acoustical design, two studios are provided for broadcasting local programs.

WHAT YOU'LL SEE
Studio A, 18 by 20 feet, is designed for broadcasting music. To insure that music is performed in this room will go into the microphone undistorted by unwanted reflections, the studio walls are of a poly-cylindrical form.

Studio B, about 15 feet square, has sawtooth walls, a form found best for a room from which talkers are to be broadcast.

Between the studios is a control room from which an engineer, seated at a control console, has an

unobstructed view of both studios and of two announcing booths. Between each two compartments of the studio and control room lay out are double panes of glass to deaden sound.

The radio station is under the overall direction of Hal Altman, station manager. His staff are: Merin W. Hagg, chief engineer; Mark M. Marrymont, announcer; Harry Bartoloni, announcer-engineer; and Larry Samuels, announcer-salesman.

GOVERNOR ON AIR
During the public visiting hours KONG will be broadcasting the following programs:

At 3:30 p. m. a special United Press wire feature on world conditions will be broadcast.

Visitors themselves will be interviewed from time to time during the afternoon.

At 4 p. m. the Rev. A. Inman Tuesday will broadcast his regular Sunday Vesper Service. Throughout visiting hours KONG will be open for inspection

ATOMIC IMPROVE CATTLE
CHICAGO (AP) — Radioactive tracers are paving the way for healthier livestock in the atomic age. Scientists in the Institute of Radiology and Biophysics, one of three institutes in the University of Chicago's \$12,000 nuclear research program, report it is now possible to learn how copper and cobalt influence the growth of pasture and cattle grazing there. With tracers scientists can follow these minerals through the cow's digestive and circulatory system.

PENALTY FITS CRIME
CHETENNE, Wyo., (AP) — Juvenile Judge A. J. Williams ruled that four 11-year-old boys who think it's fun to turn in false fire alarms need to learn how a fire department works. He ordered the four boys to report to the fire chief daily for ten days to do odd jobs about the fire house for one hour each day.

BEST WISHES AND SUCCESS
TO THE

Alameda Times-Star

AND

KONG Alameda's New FM Station

ON THE

FORMAL OPENING

OF

**THE NEW
TIMES-STAR
BUILDING**



WE TAKE PRIDE IN THE WORK WE DID
ON THE INSTALLATION OF THE . . .

PLUMBING & HEATING

Chas. Thumn Co. of California

1145 NATOMA ST.

SAN FRANCISCO